

**KDP6-V2470G8BFE1****Application**

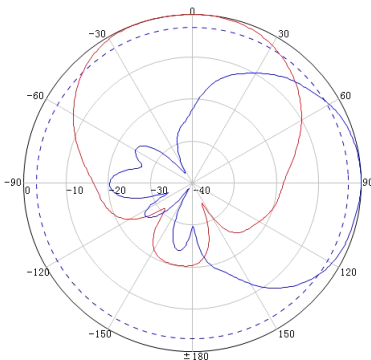
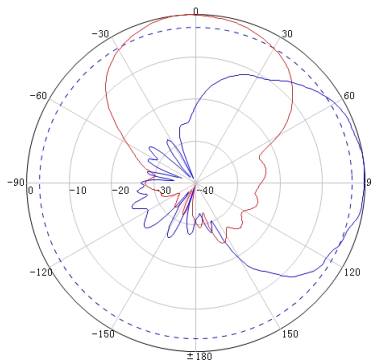
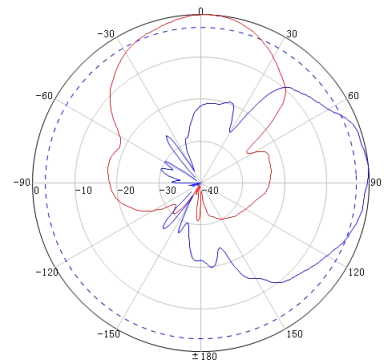
Wi-Fi Directional Antenna

**Electrical specifications**

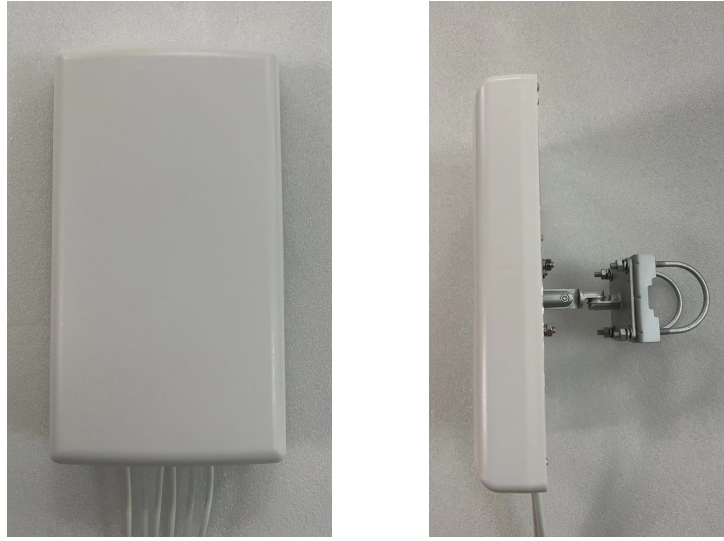
Frequency Range (MHz)	2400-2500	5150-5950	6000-7125
Polarization	Vertical		
Gain (dBi)	8	8	7
Electrical Downtilt (°)	0		
Nominal Horizontal Beam Width (°)	80	60	45
Nominal Vertical Beam Width (°)	65	60	45
Nominal Front-to-Back Ratio (dB)	≥15	≥20	≥20
Isolation (dB)	≥25		
Impedance (Ω)	50		
VSWR	≤2.0		
Maximum Power (W)	50		

**Mechanical specifications**

Connector	6*RPTNC Male
Connector position	Bottom
Exposed cable size (cm)	92
Height/Width/Depth (mm)	290*170*50
Antenna Weight (kg)	0.9(Not Include bracket)
Radome Material	ABS
Radome Color	White
Mechanical Tilt(°)	-30~+30
Operating Temperature (°C)	-40~+65
Mounting Options	Pole or Wall Mounting
Rated Wind Velocity (m/s)	40
Suitable Pole Diameter (mm)	Φ30-Φ50
Mounting Kit	JM-R3

**2400-2500MHZ****5150-5950MHZ****6000-7125MHZ**

### Product Picture



### Installation Sketch

